

# Bend Headworks—Main Canal

## Construction Period: 1938—1948

### Location: North end of Bend, Oregon



1939 - Dragline excavating of main canal and placing embankment.  
Inset: Civilian Conservation Corps (CCC) enrollees bulldozer on canal construction.



1939 - Completed section of main canal.  
Inset: Civilian Conservation Corps (CCC) enrollees drilling rock on canal.



1941 - North Unit Main Canal  
Excavation for headworks.



1941 - North Unit Main Canal Headworks  
Placing forms for headworks structure.



1942 - North Unit Main Canal. Looking upstream from right canal bank.  
State highway bridge and insulated city water main.



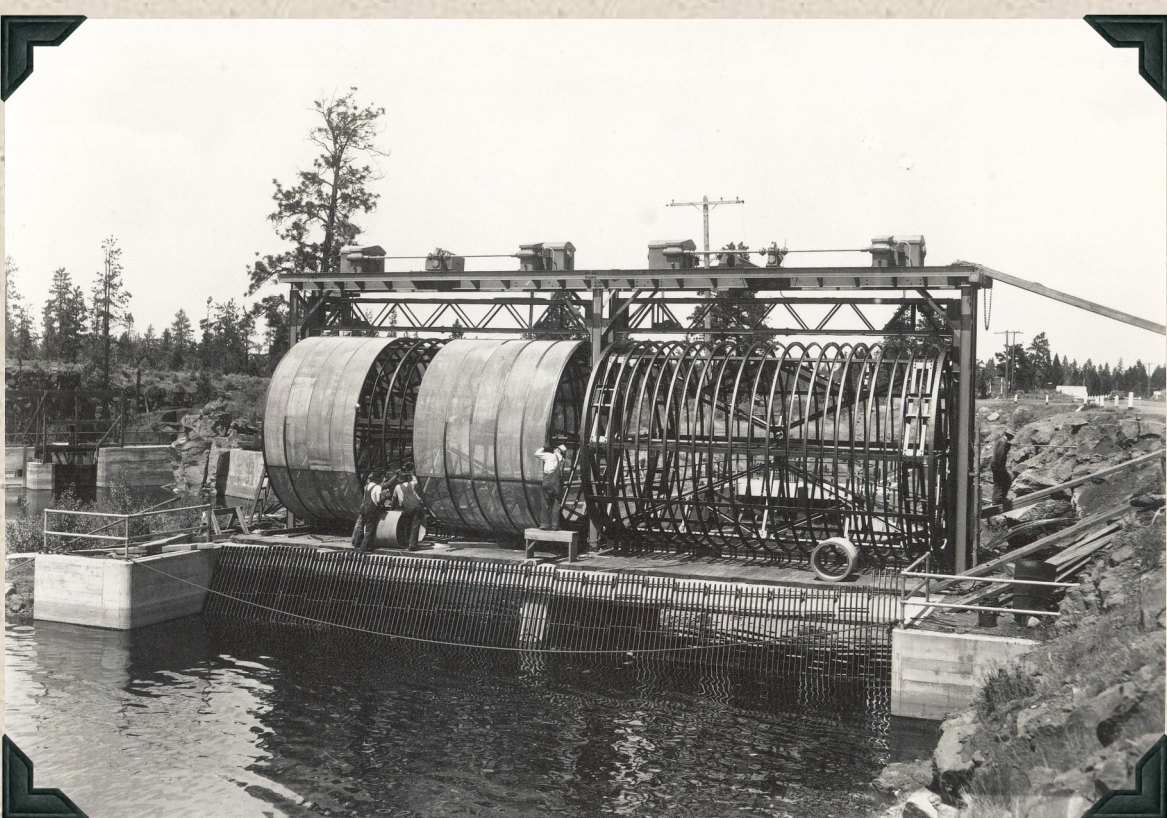
1941 - Completed North Unit Main Canal Headworks



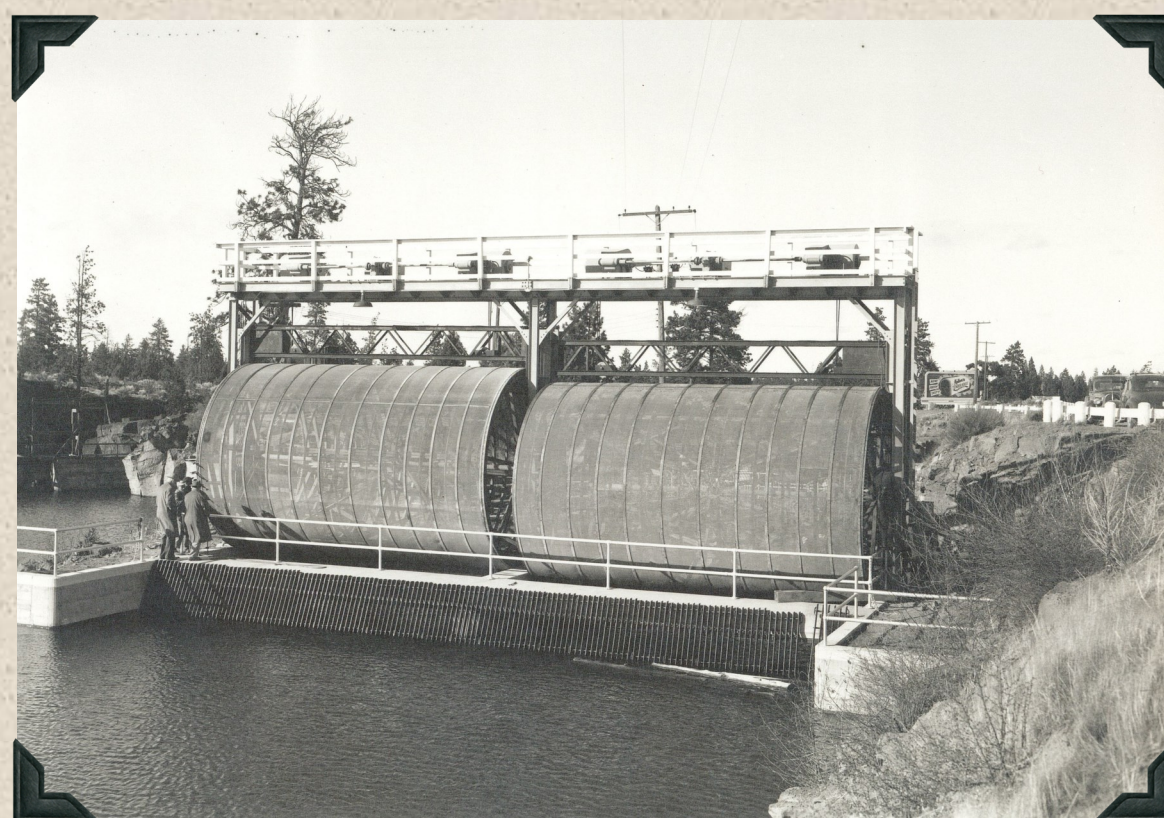
1942 - North Unit Main Canal. Looking upstream from  
the state highway bridge.



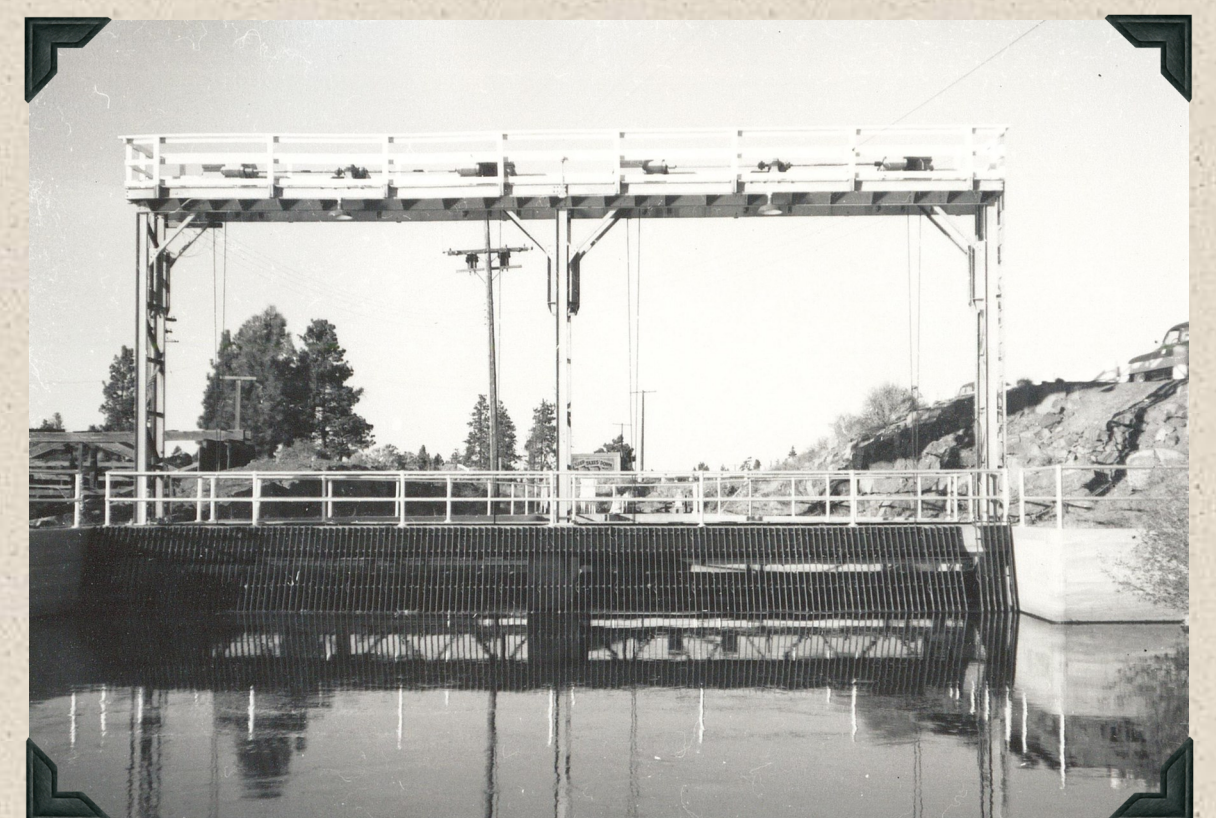
1952 - North Unit Main Canal Headworks  
Diversion gate structure for main canal.



1945 - North Unit Main Canal Headworks  
Placing screen on rotary fish screen at headworks.  
Fish screen assembled by Bureau forces.



1950 - North Unit Main Canal Headworks.  
Revolving drum fish screens at headworks, Bend, Oregon  
raised for inspection and repairs.



1952 - North Unit Main Canal Headworks  
North Unit Main Canal diversion fish screen structure.