



TAYLORNW

# NUID Piping Project Group 1 – Segment 2

Weekly Executive Summary  
Week Ending January 10, 2025

# PROJECT SCHEDULE – 3-WEEK LOOK AHEAD

10/23/2024		Contractor	M	T	W	TH	F	Sa	Su	M	T	W	TH	F	Sa	Su	M	T	W	TH	F	Sa	Su	M	T	W	TH	F	
A+B4:AT28+AT21+B4:B4:AT28	Notes		1/6	1/7	1/8	1/9	1/10	1/11	1/12	1/13	1/14	1/15	1/16	1/17	1/18	1/19	1/20	1/21	1/22	1/23	1/24	1/25	1/26	1/27	1/28	1/29	1/30	1/31	
stake Pipe Alignment	GH Surveying					■	■																						
43 Lateral Excavation	TNW																												
HWY Widening	TNW																									■	■	■	■
Pave HWY Widening	TRI COUNTY	■																											
excavate box culvert install casing	TNW				■	■	■			■	■	■	■	■			■	■	■	■	■				■	■	■	■	
remove iris bridge	TNW									■	■	■	■																
63" Pipe Delivery	FERGUSON																■	■	■	■	■				■	■	■	■	
63" Weld	TNW	■	■	■	■	■				■	■	■	■	■			■	■	■	■	■				■	■	■	■	
43-2 Lateral Trench Excavation	TNW	■	■	■	■	■																							
43-2 lateral pipe install and backfill	TNW	■	■	■	■	■				☼	☼	☼	☼	☼			☼	☼	☼										
43-2 Weld 24"	TNW																												
43-2 weld 16"	TNW				■	■																							
43-2 weld 8"	TNW	■																											
43-2 Turnouts	TNW	■	■	■	■	■				■	■	■	■																
43-3 weld pipe	TNW					■				■	■	■	■	■															
43-3 Excavate and backfill trench														■			■	■	■	■									
43-5 Weld pipe																	■	■	■	■									
43-5 Excavate and backfill trench																									■	■	■	■	
Lumen Relocate			☼	☼	☼						■	■																	

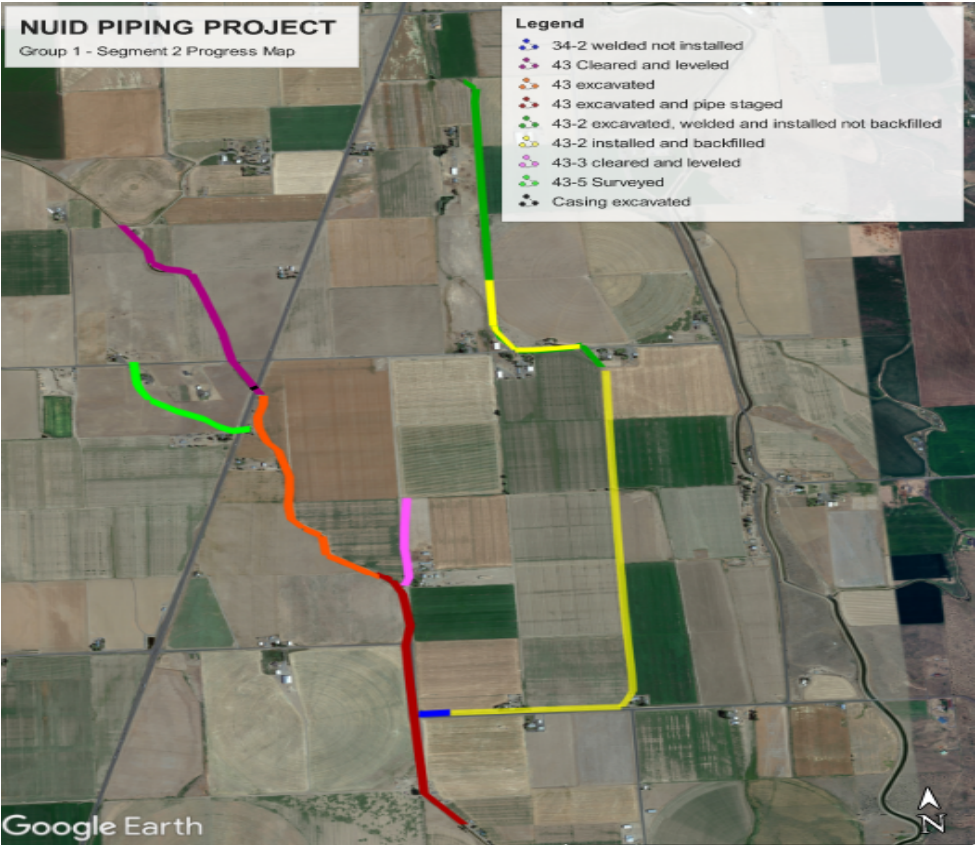


NUID Piping Project Group 1 – Segment 2



TAYLORNW

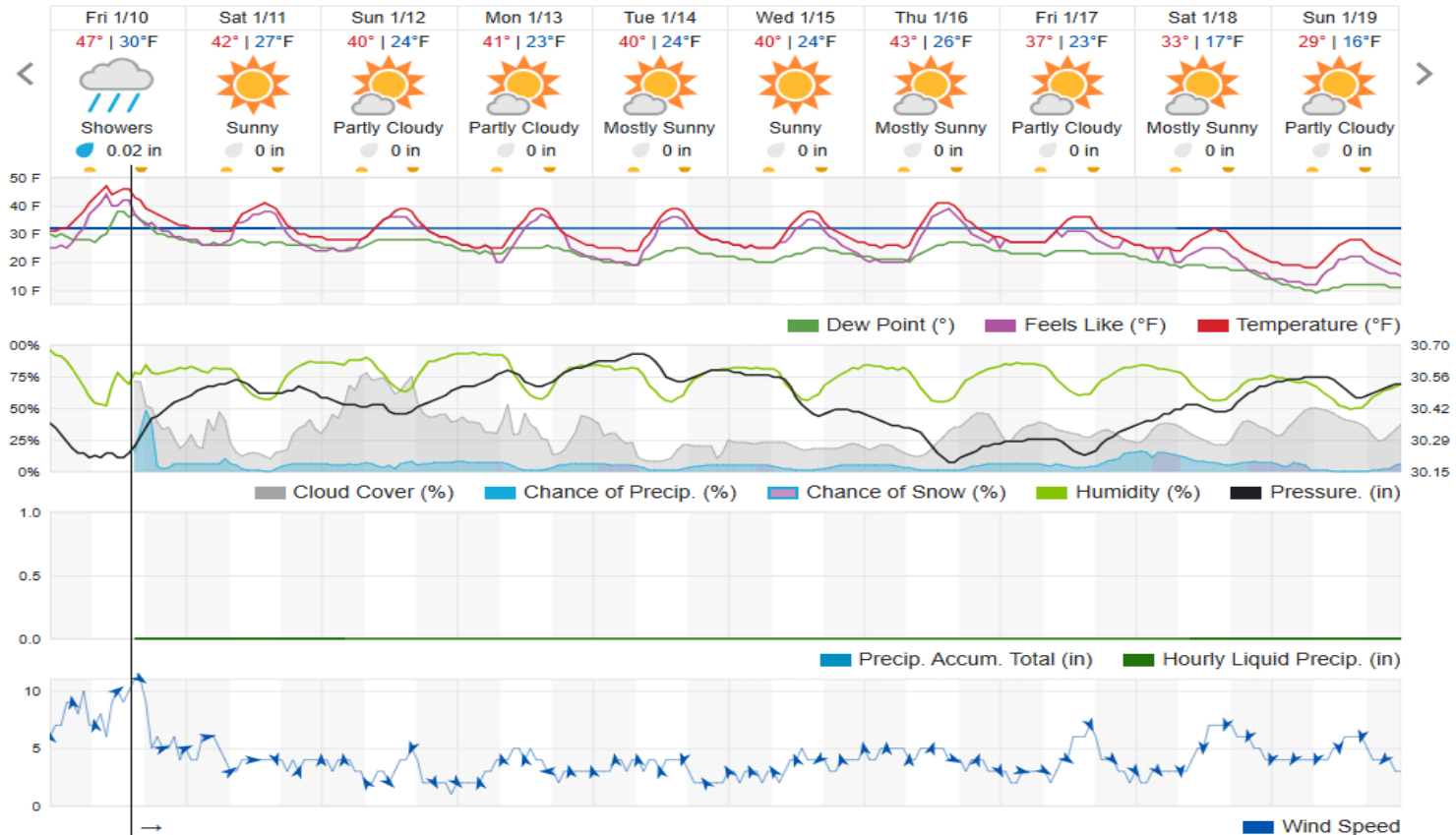
# PROJECT WORK ACTIVITIES



NUID Piping Project Group 1 – Segment 2



# 10-DAY WEATHER FORECAST



NUID Piping Project Group 1 – Segment 2





# SAFETY

## Hot Topics/Risks

- Welding machine facer, hot plate, and pinch points.
- Handling large pipe
- Overhead power lines
- Utility crossings
- Slick, muddy, and icy conditions.
- Open trench
- Power from generator to large welding machine
- Water in trenches
- Soft haul roads

## Safety Documentation

Task Description	Start/Finish Date	Document
TNW Safety Plan	10/24/24	TBD
Trenching	Started 10/28/24	Pre task Plan
Welding HDPE	Started 11/7/24	Pre-Task Plan
Pipe Installation	Started 11/15/2024	Pre-Task Plan
Traffic control	11/15/2024	Traffic Control Plan
Large pipe unloading	12/06/2024	Pre-Task Plan
Backfill	12/9/2024	Pre-Task Plan
Grade work HWY 97	12/18/2024	Pre-Task Plan
Night work on 97	1/8/2025-1/9/2025	Pre-Task Plan
Casing install	1/9/2024	Pre-Task plan

## Incidents / Concerns

- Wet Conditions causing access issues



NUID Piping Project Group 1 – Segment 2



# QUALITY

## Hot Topics/Risks

- Welding data logger
- Rain and bad weather

## QA/QC Documentation

Task Description	QA/QC Representative	Date
Weld data log	TNW	Ongoing
Backfill proctor	Carlson testing	11/13/2024
Pipe bedding proctor	Carlson testing	11/13/2024
8" Bend back test	Kelley Hamby	11/19/2024
20" bend back test	Kelley Hamby	11/19/2024
Density Testing 43-2	Carlson testing	11/21/2024
16" Bend back test	Kevin Krew	11/22/2024
Density testing 43-2	Carlson testing	12/02/2024
63" Bend Back Test	Kevin Krew	12/19/2024
6" & 8" Bend back tests	Kelley Hamby	1/3/2025
6" bend back test	Kelley Hamby	1/09/2025

## Look Ahead QA/QC

- Weld inspections, 63", 8",
- Pipe inspections all week
- Turn out, and ARV inspections all week
- 78" Profile Wall Weld Inspection
- Density testing HWY 97 casing



NUID Piping Project Group 1 – Segment 2



# PROJECT PHOTOS



REMOVING BOX CULVERT WEST SIDE OF HWY 97



43-2 ASSEMBLING TURN OUTS



NUID Piping Project Group 1 – Segment 2





# PROJECT PHOTOS



43-2 16" INSTALL



43 - INSTALL 63" STARTING AT FLANGE ADAPTER



NUID Piping Project Group 1 – Segment 2

