

Haystack Dam & Equalizing Reservoir

Construction Period: 1956-1957

Location: Offstream about 10 miles south of Madras, OR



1957 - Haystack Dam.



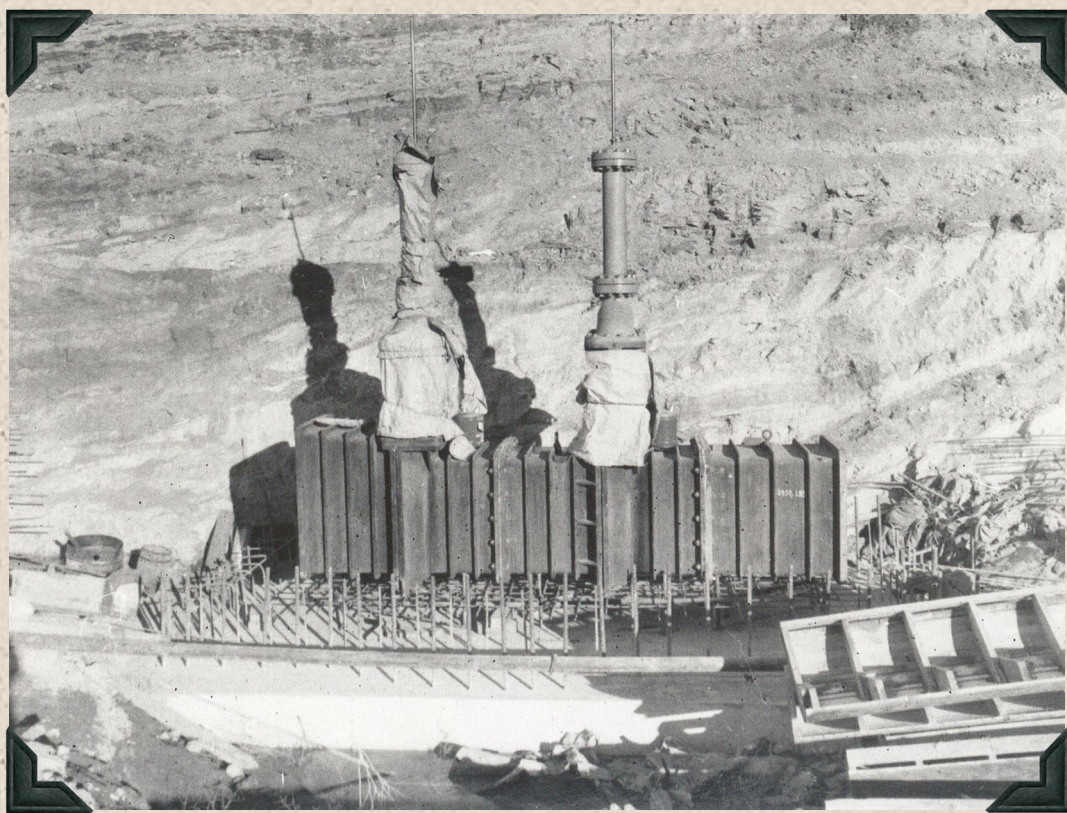
1956 - Outlet-works upstream conduit concrete in place prior to placing cut-off collars.



1956 - Reinforcement steel in upstream section of outlet-works conduit.



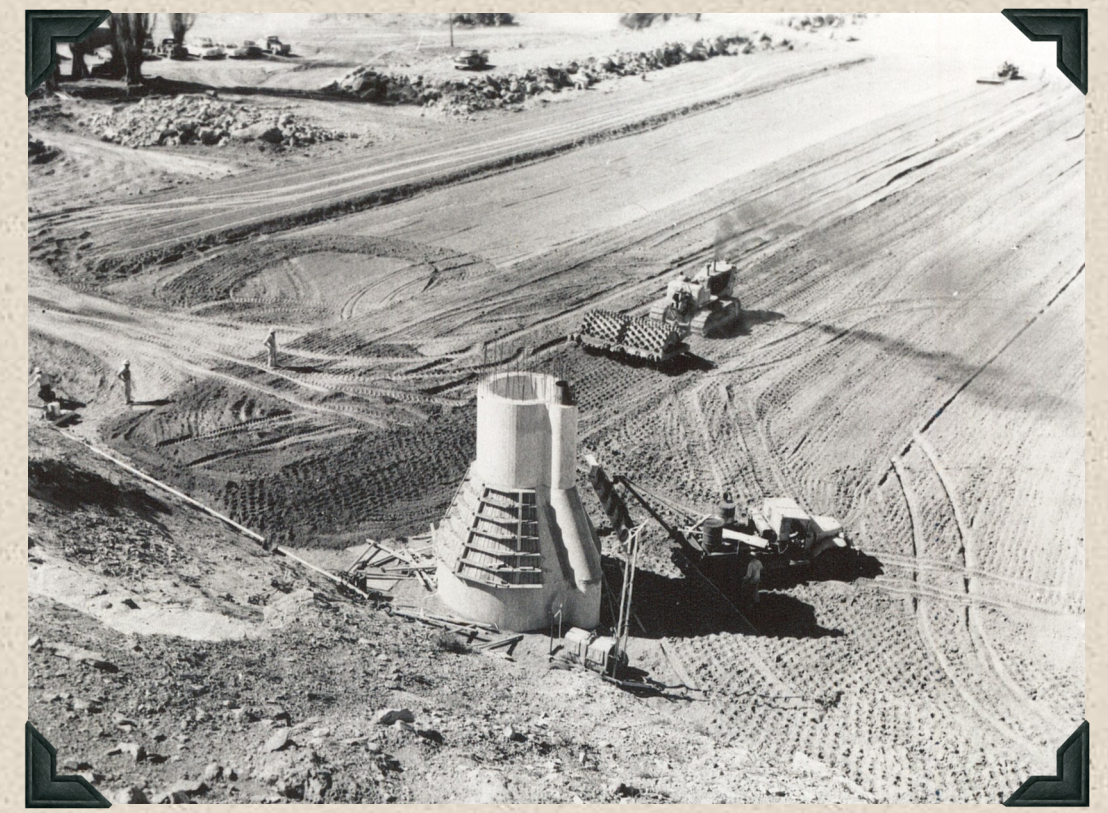
1956 - Borrow area #1 in Haystack Reservoir site.



1956 - High pressure gates and metal conduit lining in place on concrete base of gate chambers.



1957 - Completed upstream section of concrete outlet-works conduit and cut-off collars.



1957 - Compacting zone 1 earth fill in dam embankment. Removing forms on gate chamber and shaft.



1956 - Intake structure of outlet works.



1957 - Placing earth and rockfill in dam embankment in zones 1, 2 and 4.



1958 - Aerial view of Haystack Reservoir from the southeast. County road left foreground.



1958 - Aerial view of Haystack Dam. Feeder canal on the right and North Unit Main Canal in the center and to the left along the base of the right abutment.



1958 - Recreation. Water skiing on Haystack Reservoir. Haystack Butte in the distance.



1958 - Recreation. Swimming, boating and picnicking on the shores of Haystack Reservoir.