

Crooked River Crossing (Main Canal)

Construction Period: 1944 - 1946

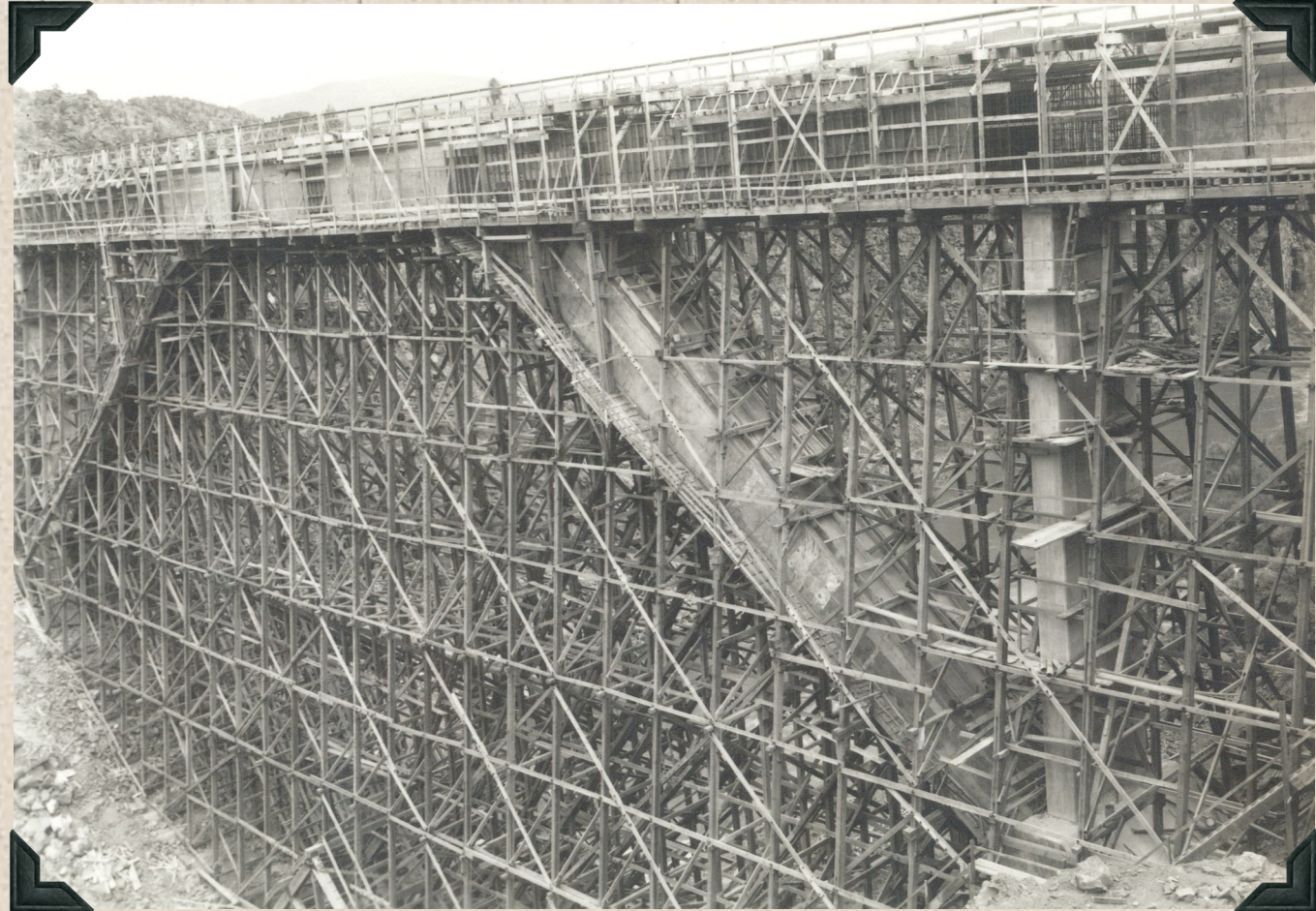
Location: 3 miles east of Terrebonne, Oregon



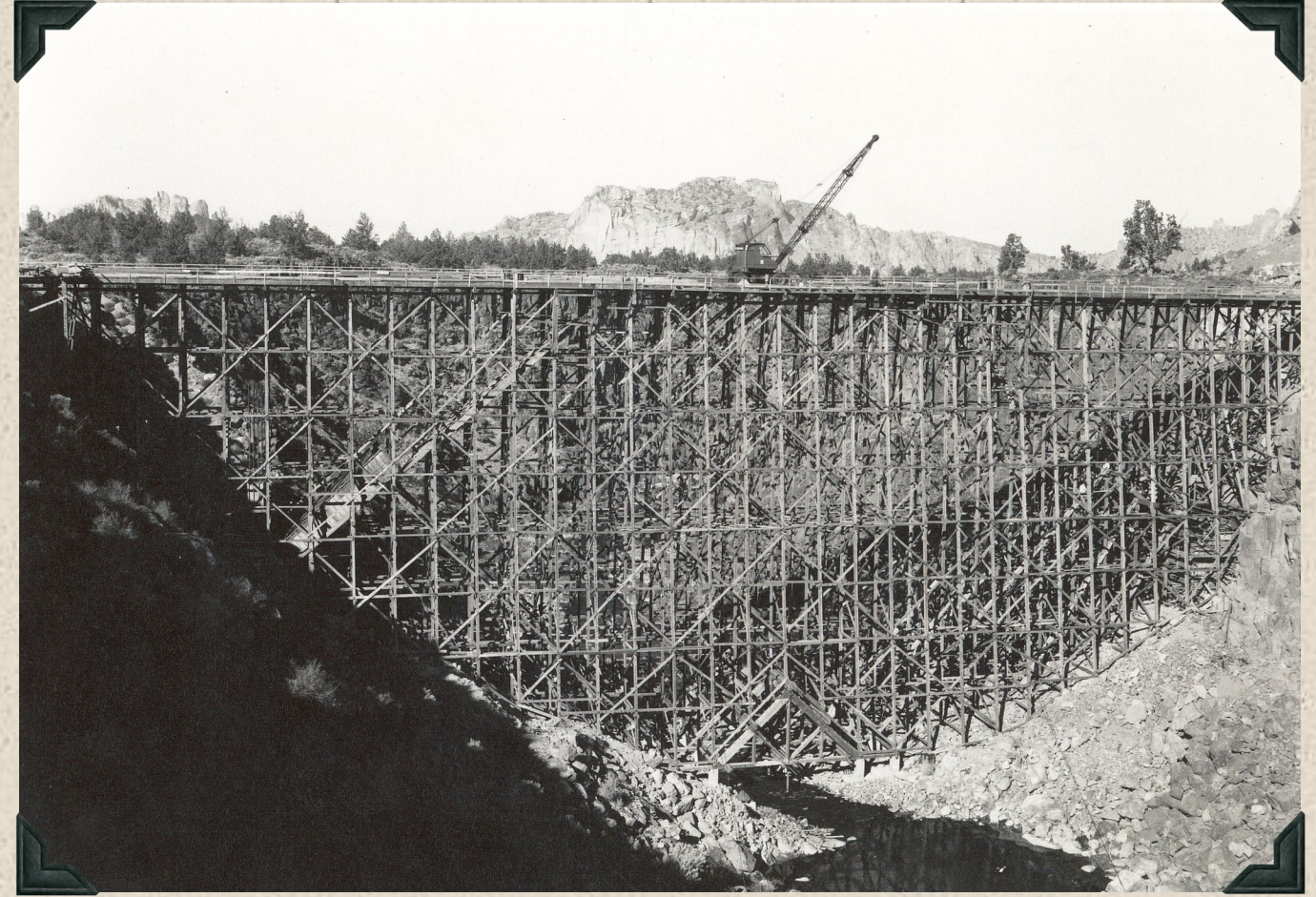
1944 - Rock excavation at inlet end of Crooked River Crossing, North Unit Main Canal.



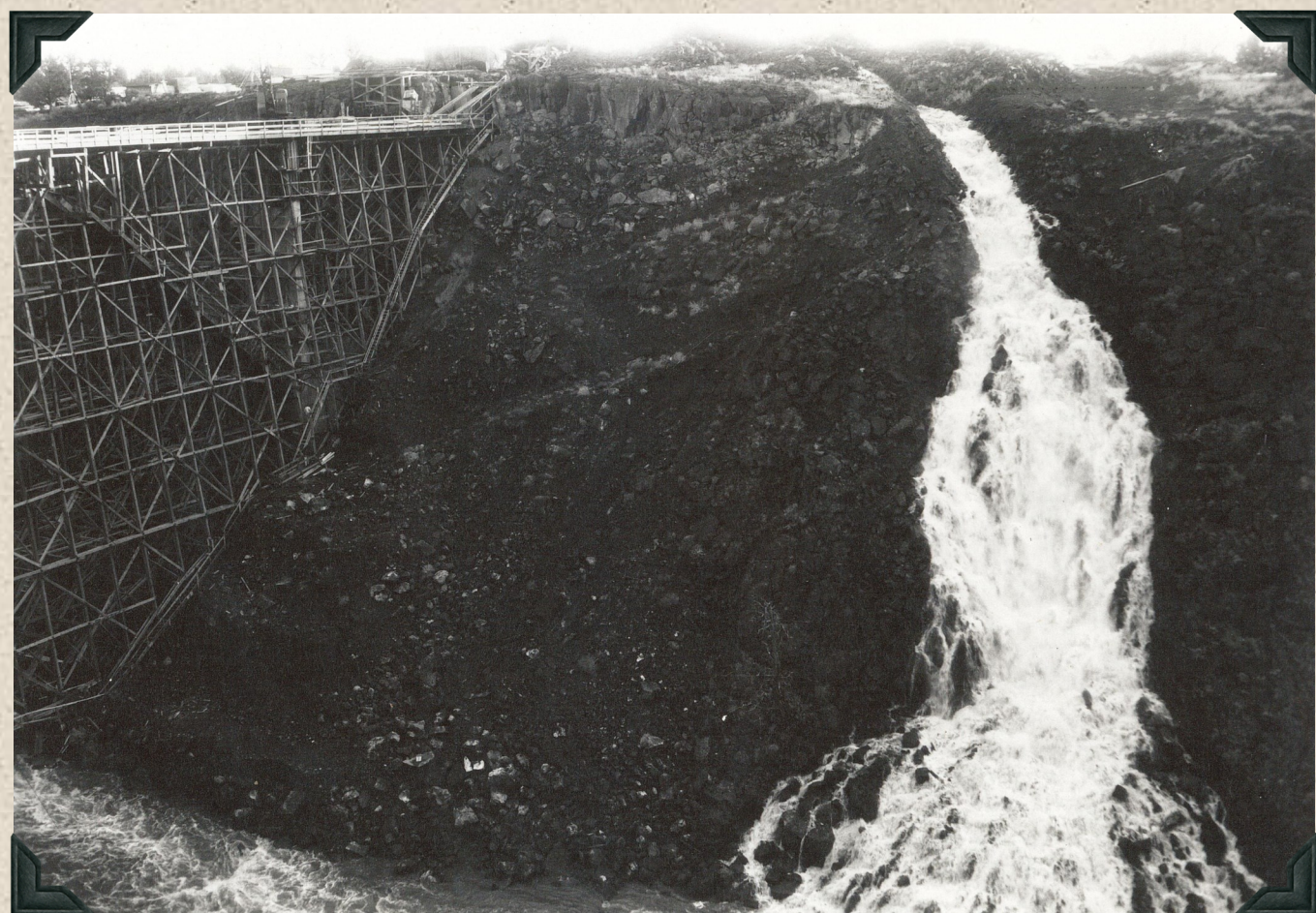
1944 - Site of Crooked River Crossing for the North Unit Main Canal.



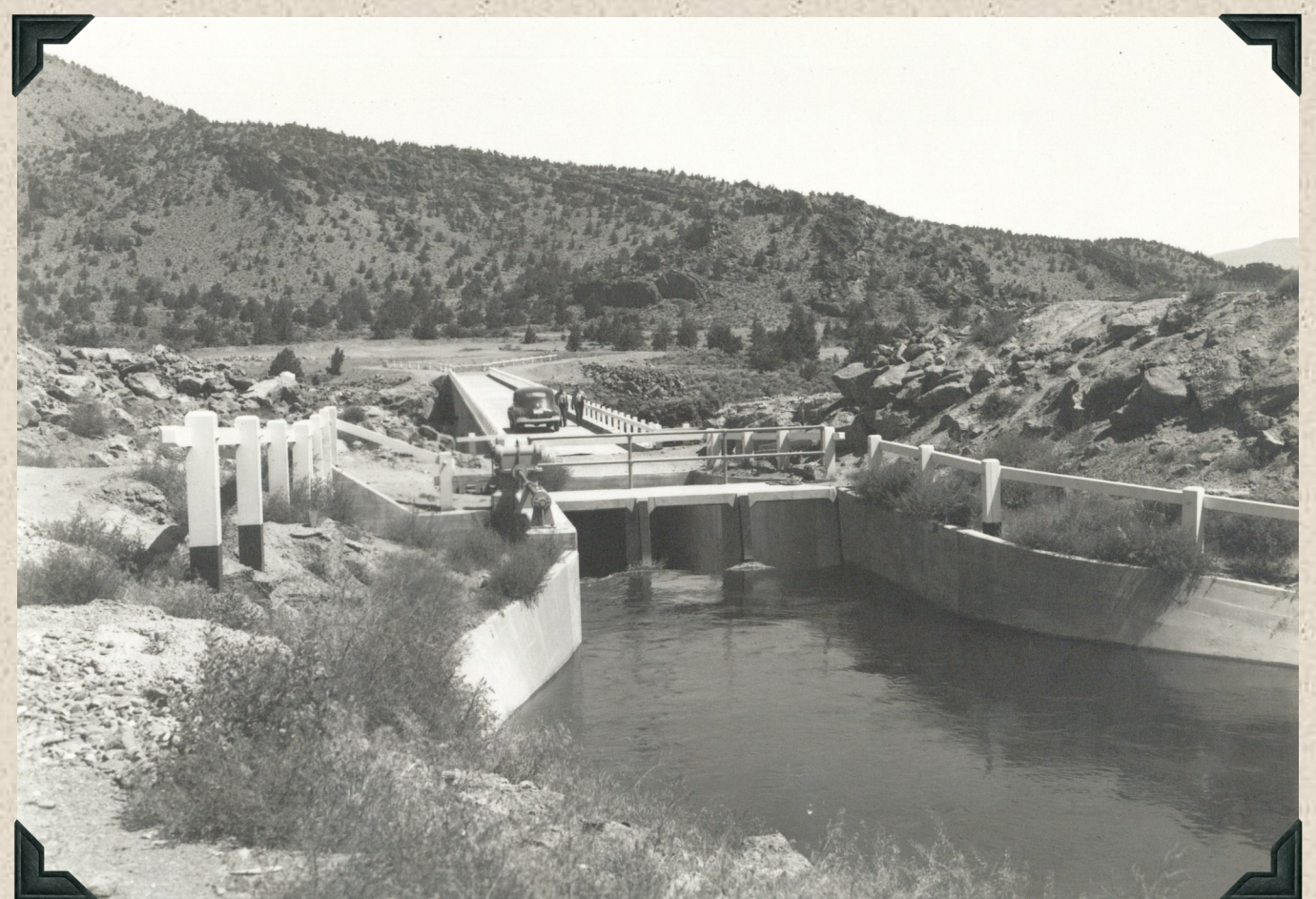
1946 - Crooked River Crossing, North Unit Main Canal. Showing erection of enclosed flume and roadway.



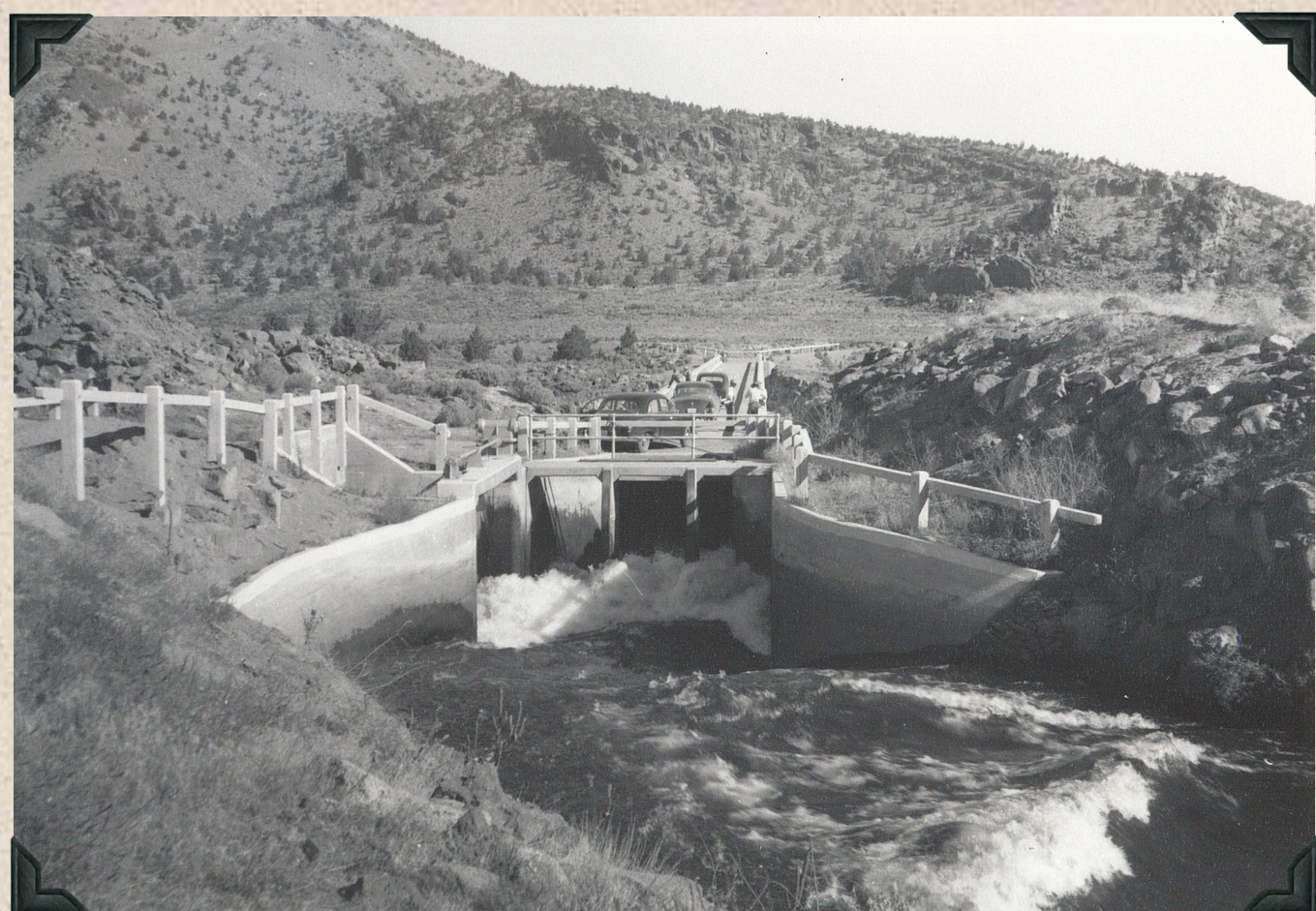
1946 - Crooked River Crossing, North Unit Main Canal. Looking downstream from south canyon rim, temporary timber falsework completed.



1946 - Crooked River Crossing, North Unit Main Canal. Wasteway in operation during canal priming and puddling. After traveling 26 miles cross country through the main canal, this Deschutes River water spills in to the Crooked River.



1946 - Crooked River Crossing after completion. Looking downstream from wasteway structure.



1952 - Crooked River crossing, North Unit Main Canal. Inlet, check and wasteway.



1946 - Crooked River Crossing, North Unit Main Canal. View of completed structure looking downstream from south rim of canyon.