

Willow Creek Siphon

Construction Period: 1947-1948

Location: West of Madras, OR

Willow Creek Canyon



1947 - North Unit Main Canal. Willow Creek Crossing. Access roads on south slope. (Morrison-Knudsen Co.)



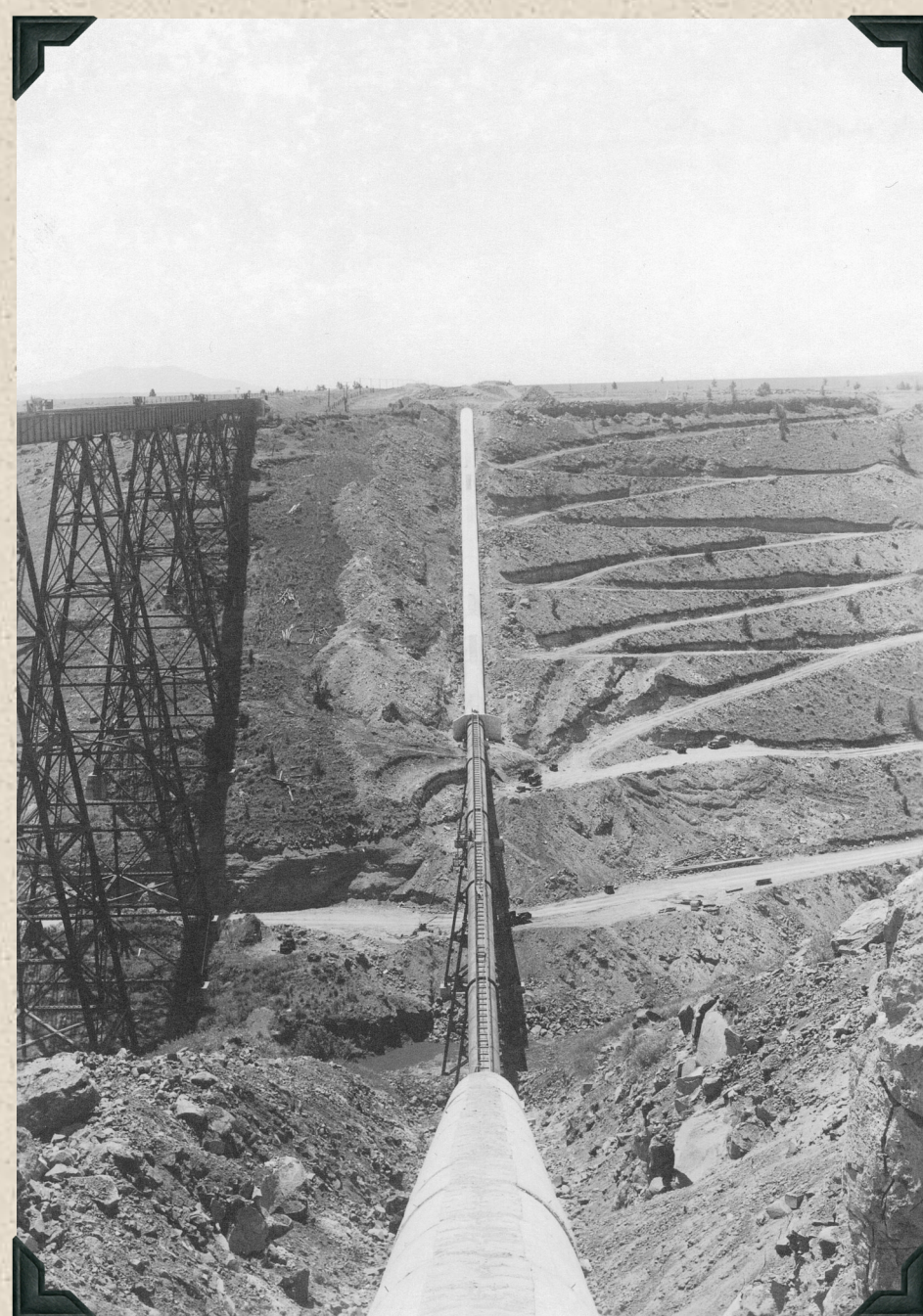
1947 - North Unit Main Canal. Willow Creek Siphon. Transition end of intake structure.



1948 - North Unit Main Canal. Willow Creek Crossing. View from north bank of canyon. Spot welding center pipe section in place.



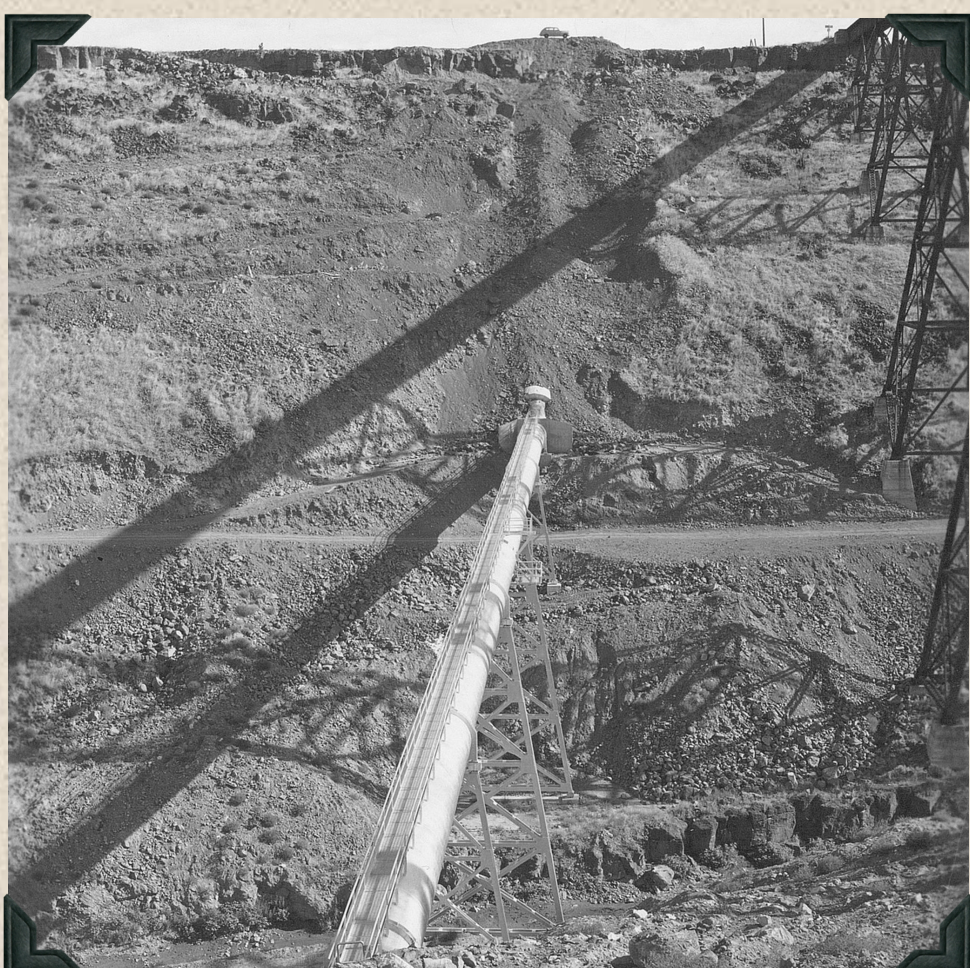
1947 - North Unit Main Canal. Willow Creek Siphon. Looking south, showing completed concrete barrel on south slope and partly completed barrel on north slope. Morrison-Knudsen Co.



1948 - North Unit Main Canal. Willow Creek Crossing. View along center line from outlet end.



1948 - North Unit Main Canal. Willow Creek Crossing. Left side of concrete barrel with two collars and base block in place. Workmen installing drain tile.



Willow Creek Siphon. Buried concrete barrel on north hill face.



Completed Willow Creek Siphon.



Willow Creek Siphon - Maintenance.